

## Test Case-32

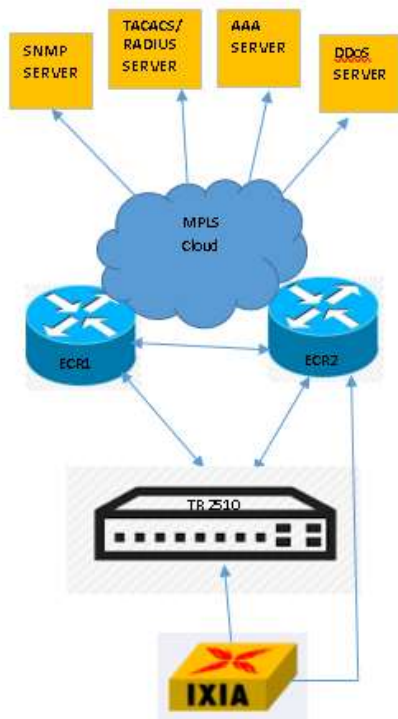
**Test Name:** RJIL-IP-QA-DS-SYS-032

**Test Objective:** To check support of at least 4K VLANs per access port.

### Test Configuration:

```
Vlan 1
Vlan 2
Vlan 3
Vlan 4
Vlan 5
!
!
Vlan 4024
Vlan 4025
Vlan 4026
Vlan 4027
Vlan 4028
!
```

**Test Set up (Including Pre requisites):** Switch, ECR1, ECR2, IXIA



**Procedure:** Configure VLAN on the switch and see the same using show VLAN

<b>Action:</b>		<b>Response:</b>	
<b>1</b>	Generate 4K vlan and pass on the interface of the switch Show vlan	<b>1</b>	Switch should be able to configure 4K vlans and it should be able to show these vlan and should be able to forward traffic for these vlans.
<b>Expected Result:</b> Switch should be able to configure 4K VLANs per access port			
<b>Actual Result:</b>			
Switch#sh vlan interface gigaEthernet 0/3			
<pre> Interface      VLAN Name           Property PVID Vlan-Map    uTagg-Vlan-Map ----- GigaEthernet0/3  Trunk  1  1-4094     1 Switch#  vlan 333  name VLAN333 ! vlan 1-4094 !</pre>			